



tourism





---

Department:  
Tourism  
REPUBLIC OF SOUTH AFRICA

# **TOURISM FACTSHEET: QUARTER TWO SOUTH AFRICAN TOURISM PERFORMANCE**

**VOLUME 2: 11 SEPTEMBER 2018**

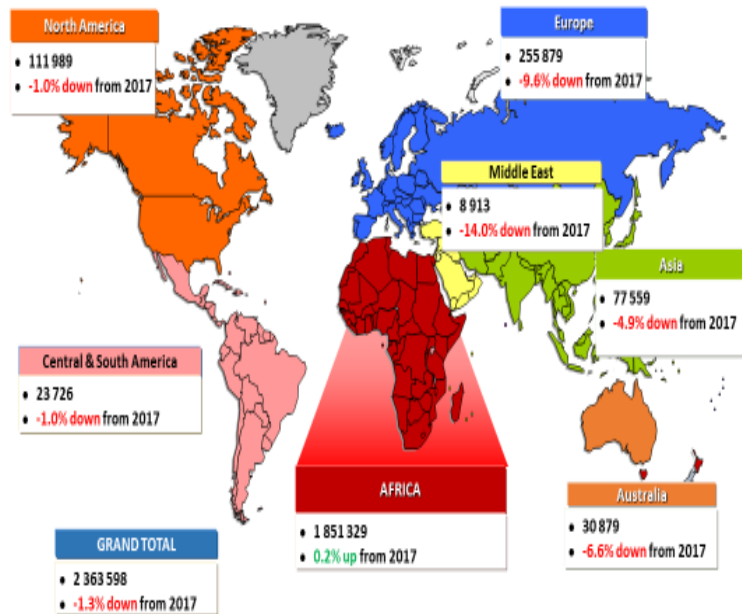
## TABLE OF CONTENTS

Key Indicator	Page No.	Key Indicator	Page No.
<b>SECTION ONE</b>		<b>SECTION THREE</b>	
<b>SOUTH AFRICA INBOUND TOURISM PERFORMANCE</b> 		<b>SOUTH AFRICA'S RELATED TOURISM INDUSTRIES PERFORMANCE</b> 	
SOUTH AFRICA TOURIST ARRIVALS PERFORMANCE	1	Aviation-Passenger and Aircraft movements	4
SOUTH AFRICA TOP 5 OVERSEAS AND AFRICA MARKETS		Accommodation-Total Income -Occupancy Rate Food and Beverages-Total Income	
<i>QUARTER ONE PERFORMANCE OF KEY INBOUND TOURISM INDICATORS (JAN - MAR 2018)</i> TOTAL FOREIGN TOURIST ARRIVALS BY MONTH TOTAL FOREIGN DIRECT SPEND LENGTH OF STAY BEDNIGHTS GEOGRAPHIC SPREAD	2	<b>SECTION FOUR</b>	
		<b>SOUTH AFRICAN EMPLOYMENT TOURISM PERFORMANCE</b> 	4
		SOUTH AFRICAN TOURISM EMPLOYMENT ESTIMATES	4
<b>SECTION TWO</b>		<b>REFERENCES</b>	
<b>SOUTH AFRICA'S DOMESTIC TOURISM PERFORMANCE</b> 			
TOTAL DOMESTIC TRIPS	3		
<i>QUARTER ONE PERFORMANCE OF KEY DOMESTIC INDICATORS</i> TOTAL SPEND LENGTH OF STAY BEDNIGHTS TOTAL HOLIDAY TRIPS	3		

## SOUTH AFRICA INBOUND TOURISM PERFORMANCE

### SOUTH AFRICA TOURIST ARRIVALS PERFORMANCE BY REGION (APR-JUN 2018)

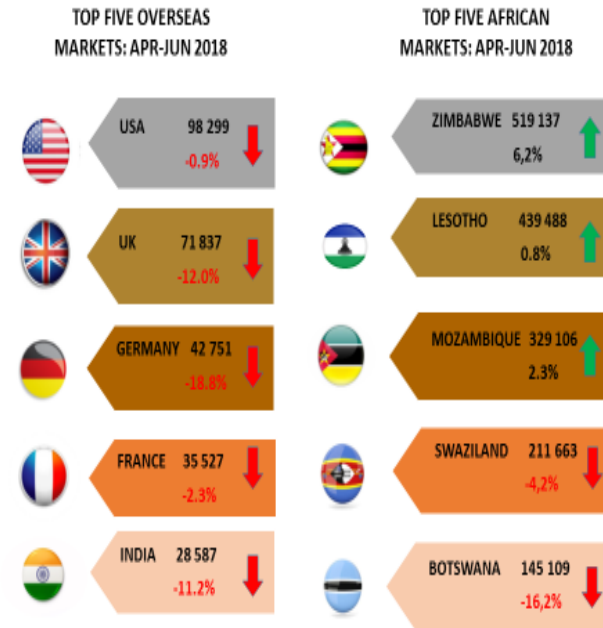
South African tourist arrivals decreased by 1.3% for the period Apr-Jun 2018 compared to Apr-Jun 2017.



Source: Stats SA: Tourism and Migration report: June 2018

### SOUTH AFRICA TOP 5 OVERSEAS AND AFRICA MARKETS (APR-JUN 2018)

All top five overseas markets experienced a decline during the period April-June 2018. The top three African markets (Zimbabwe, Lesotho and Mozambique) experienced an increase while tourist arrivals from Botswana and Swaziland declined during the same period under review.



Source: Stats SA: Tourism and Migration report: June 2018

## QUARTER ONE PERFORMANCE OF KEY INBOUND TOURISM INDICATORS (JAN - MAR 2018)

### TOTAL FOREIGN DIRECT SPEND



**R20.7 billion**

**+8.8%**

increase compared to 2017

### LENGTH OF STAY

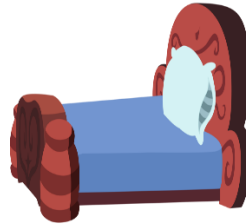


**11 nights**

**+6.6%**

increase compared to 2017

### BEDNIGHTS



**29.4 million**

**+13.8%**

increase compared to 2017

### GEOGRAPHIC SPREAD



**+16%**

Tourists visited more than 1 Province

**Compared to 15% in Q1: 2017**

**Note:** SA Tourism Quarter Two performance report is not yet available therefore Quarter One performance for the above indicators will be reported.

*Source: South African Tourism: Quarter One Report, 2018.*

## SOUTH AFRICA'S DOMESTIC TOURISM PERFORMANCE

### PERFORMANCE OF SOUTH AFRICA'S DOMESTIC TOURISM INDICATORS (JAN-MAR 2018)

Comparing Jan-Mar 2018 to Jan-Mar 2017, there was a decline recorded in Domestic trips, total domestic direct spend, length of stay and bed nights as shown below.

#### DOMESTIC TRIPS Q1 2018



3.8 million trips  
**-13.5%** decrease from Q1 2017

#### KEY DOMESTIC INDICATORS' PERFORMANCE: JAN-MARCH 2018

##### LENGTH OF STAY



**3 nights**

**-4.1%**

decrease compared to 2017

##### BEDNIGHTS



**12.4 million**

**-17.0%**

decrease compared to 2017

##### TOTAL DOMESTIC DIRECT SPEND



**R5.0 billion**

**-7.0%**

decrease compared to 2017

##### PURPOSE OF VISIT: HOLIDAY



**645 000 trips**

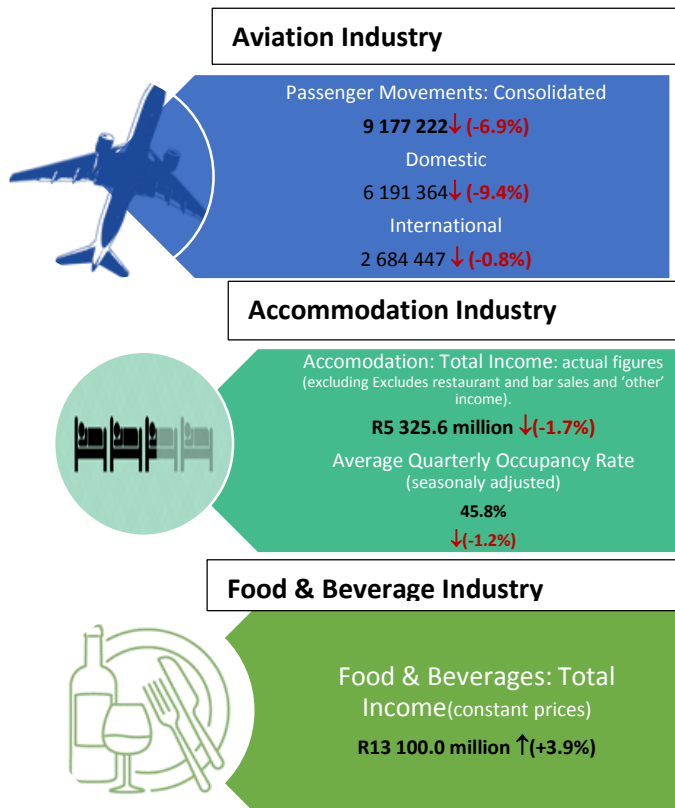
**-34.8%**

decrease compared to 2017

*South African Tourism: Quarter One Report, 2018.*

## SOUTH AFRICAN RELATED INDUSTRIES TOURISM PERFORMANCE (APR-JUN 2018)

The food and beverages industry experienced a positive growth for the period April-June 2018 compared to April-June 2017. The accommodation and aviation industry experienced a decline when comparing April-June 2018 to April-June 2017.



Source: Airports Company South Africa June data 2018, Stats SA, Accommodation data cuts and Food and Beverages report: June 2018

## SOUTH AFRICAN TOURISM EMPLOYMENT ESTIMATES (APR-JUN 2018)

It is estimated that the tourism sector contributed about 738 151 jobs, which was about 4.5% contribution to total employment.

### Total Direct Tourism Employment



Q1 2017	Q1 2018	Difference	% Growth
711 145	738 151	27 006	3.8%

Source: Stats SA: Quarterly Labour Survey Force Survey Q2 Data (Apr-Jun: 2018)

NOTE: Stats SA TSA was used to calculate estimate using the 2016 tourism employment ratios

### REFERENCES:

- <http://www.statssa.gov.za/publications/P0351/P0351June2018.pdf>
- <https://sat-backenlive.azurewebsites.net/media/208773/quarter-1-2018-travel-patterns-in-south-africa.pdf?downloadId=238074>
- <http://www.airports.co.za/business/statistics/aircraft-and-passenger>
- <http://www.statssa.gov.za/publications/P6410/P6410June2018.pdf>
- <http://www.statssa.gov.za/publications/P6420/P6420June2018.pdf>
- <http://www.statssa.gov.za/publications/P0211/P02112ndQuarter2018.pdf>